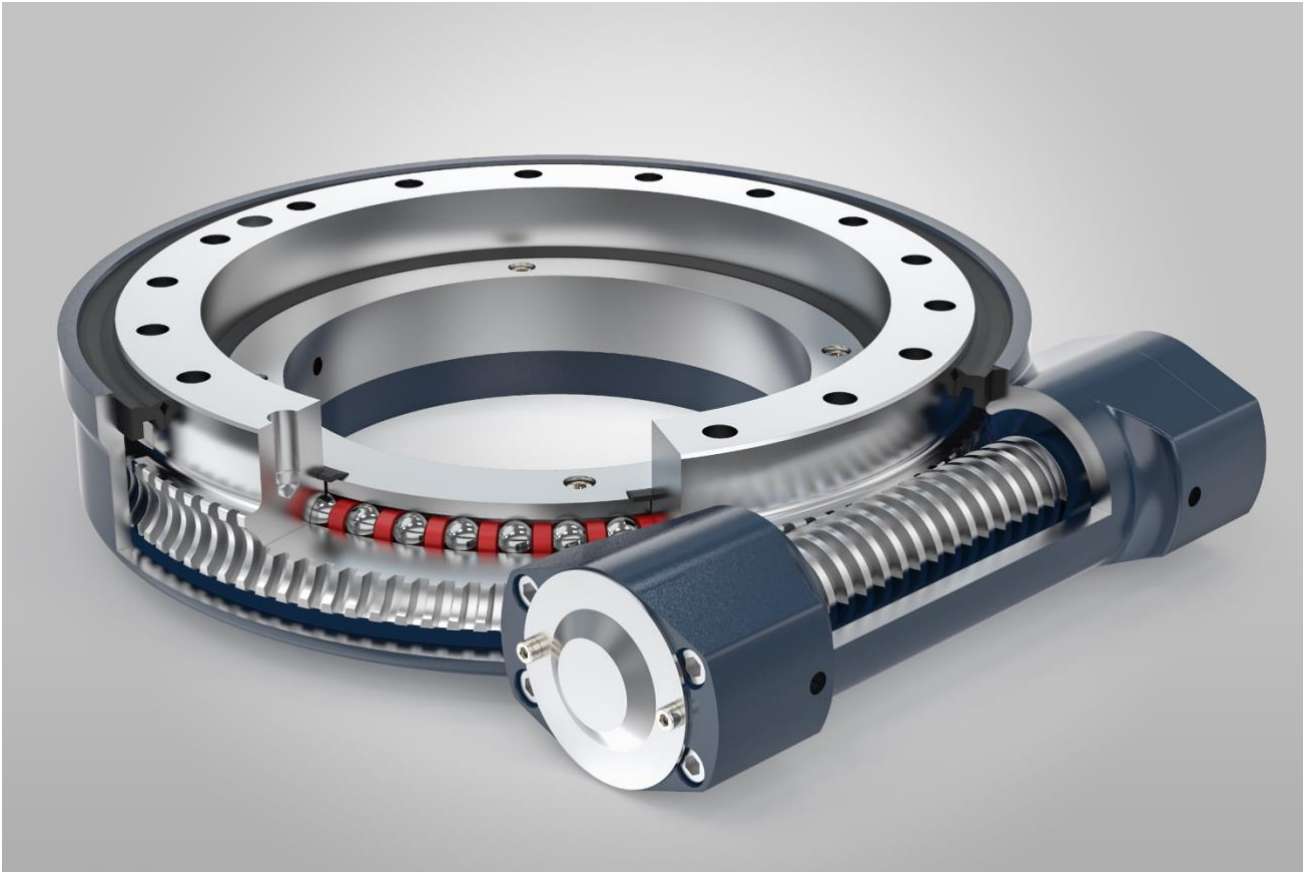


WGE - WORM GEAR SLEW DRIVE



Slew drives are complete, **ready to install** systems that consist of a **ball raceway** slewing ring and **worm gear** drive train, enclosed in a **protective & sealed** housing. Slew drives are an **elegant solution**, capable of handling combined **tilting moment, radial & axial loads** within a **compact & cost efficient** design.

Always in stock

Applications

• Steering gear	• Handling equipment	• Frost fan	• Cranes
• Defence equipment	• Construction machinery	• Attachment tools	• Aerial platforms
• Heavy Load Platforms	• Forestry machinery	• Welding Positioners	• Lifting gear

Key Features

- **6 distinct sizes** available in stock, ranging from 178mm (7``) to 630mm (25``)
- **Fully enclosed** with advanced sealing, ensuring low maintenance & long service life
- **Hardened & ground** worm drive for smooth rotation & ultimate gear life
- **Low profile**, self-retaining & ready to install
- **Optimized** for weight versus performance
- **Cost efficient & reliable**



Titanus SLEW RINGS

Technical features across product line

Raceway Diameter	175mm (7''); 223mm (9''); 342mm (14''); 430mm (17''); 540mm (21''); 630mm (25'')
Maximum output torque	34.2 KNm
Maximum tilting moment	310 KNm
Maximum axial load	2360 KN
Maximum radial load	945 KN
Maximum Output Speed	< 2.5 rpm
Backlash	≤ 0.1°

Easy maintenance

- Reduced need for frequent lubrication
- Perfect for difficult access situations
- Less contamination within the bearing
- Improved lubrication properties



STOCKED RANGE & DRAWINGS

Drawing	Nominal Sizes OD x ID x Thk	Output Torque	Moment Torque	Axial Load	Radial Load	Worm Gear Ratio	Weight
WGE/175	276mm x 105mm x 100mm	3.5 kN.m	14.2 kN.m	220 kN	90 kN	47:1	35 Kg
WGE/223	350mm x 145mm x 108mm	8.0 kN.m	35.6 kN.m	578 kN	215 kN	62:1	53 Kg
WGE/342	460mm x 265mm x 110mm	10.8 kN.m	71.2 kN.m	960 kN	360 kN	86:1	75 Kg
WGE/430	570mm x 332mm x 108mm	12.9 kN.m	142.4 kN.m	1166 kN	435 kN	104:1	96 Kg
WGE/540	693mm x 425mm x 130mm	28.7 kN.m	203 kN.m	1598 kN	640 kN	90:1	172 Kg
WGE/630	793mm x 525mm x 130mm	34.2 kN.m	310 kN.m	2360 kN	945 kN	104:1	202 Kg



Titanus SLEW
RINGS